

MS Windows 10 File Management



ADNAN ALKHDHAIRI
163103013

18 April 2017

Microsoft Windows 10

- personal computer operating system developed and released by Microsoft.
- introduces what Microsoft described as "universal app" ...
- it makes easier to access apps for the "UWP" ...
- Windows family .
- windows Core ...



Windows 10 file management



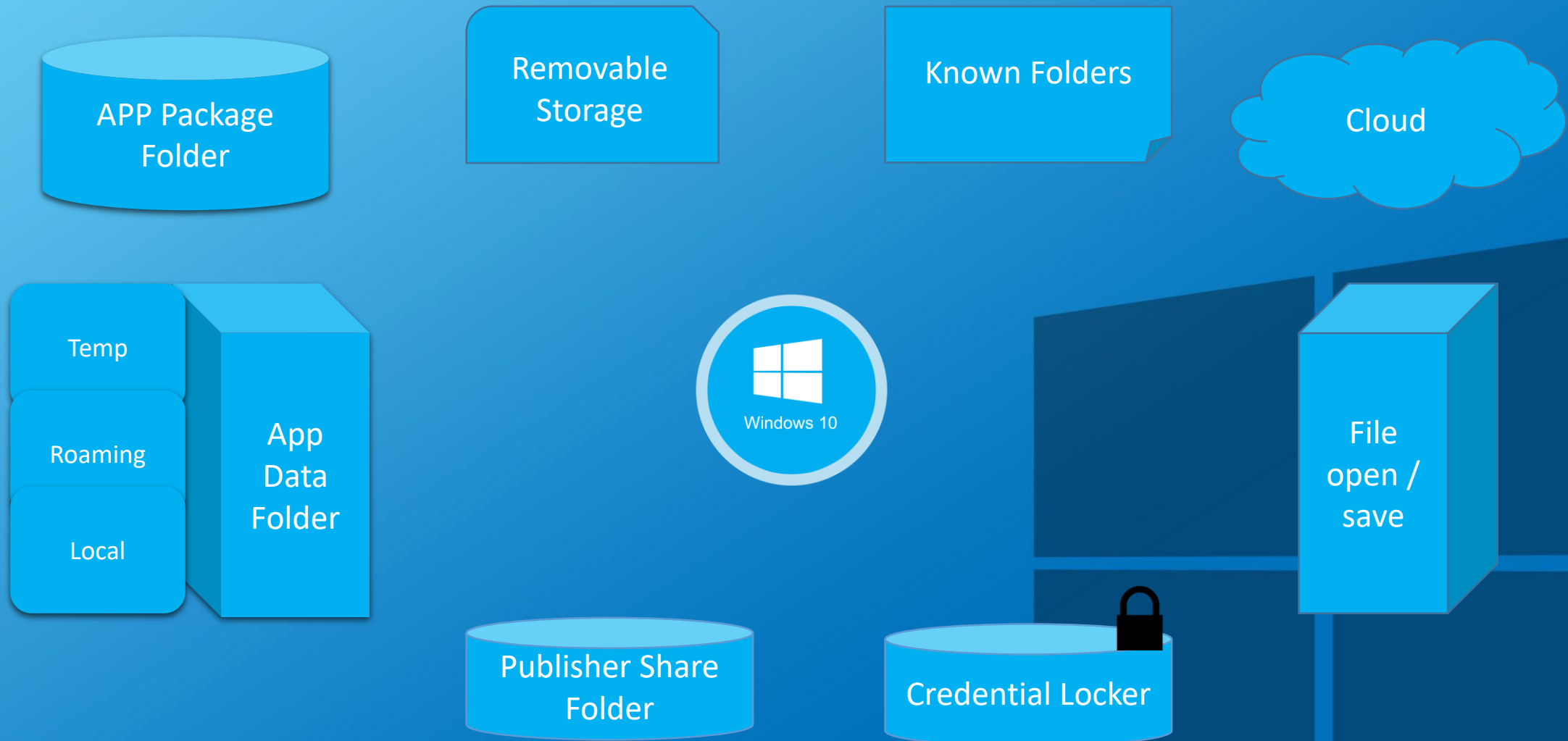
To know how windows 10 management the files you must know about how is it arranging data in isolated storage .

One of the most important thing in application is Data , and one of the easiest and fastest way you can start saving data is directly to the file system , that windows developer already know about **isolated storage** , and it's the same **concept follows in windows 10 app**.

There are many areas where application can access the data. The application contains some area , which is private to that particular application and is inaccessible to the others , but there are many other areas , where you can store and save your data inside a file.



Where is the files "data" ?



File locations

1. Application package folder

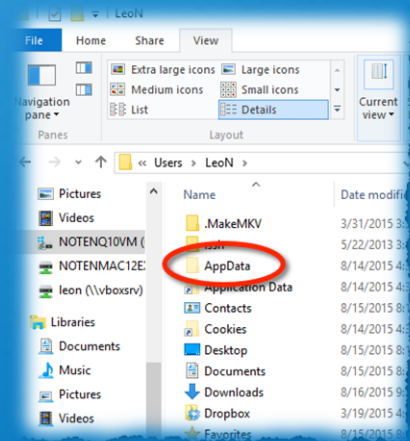
- Package manager install all app files in to the package folder and it contain the file which related to the apps .
- It can has any thing ; (Images , SQL , xml , and other types of files) .
- can put any files or folder in there do not need in your app .
- its read only .
- This what I install with in it .



2. Application data folder

3 primary sets :

- A. LOCAL folder
- B. Roaming folder
- C. Temp folder



A. LOCAL folder

- applications store local data into local folder
- can create file or folder within it , (store any data).
- read and write .
- Limitation depend on the storage device .

B. Roaming folder

- store the settings and properties related to application
- a little bit in another module .
- can read and write stuff .
- it is get synchronizes across all of the users device.
- Not gigantic , 100 kb per app.

C. Temp folder

- temporary storage .
- no guarantee
- (may be) Lose data when reboot.



3. Credential locker

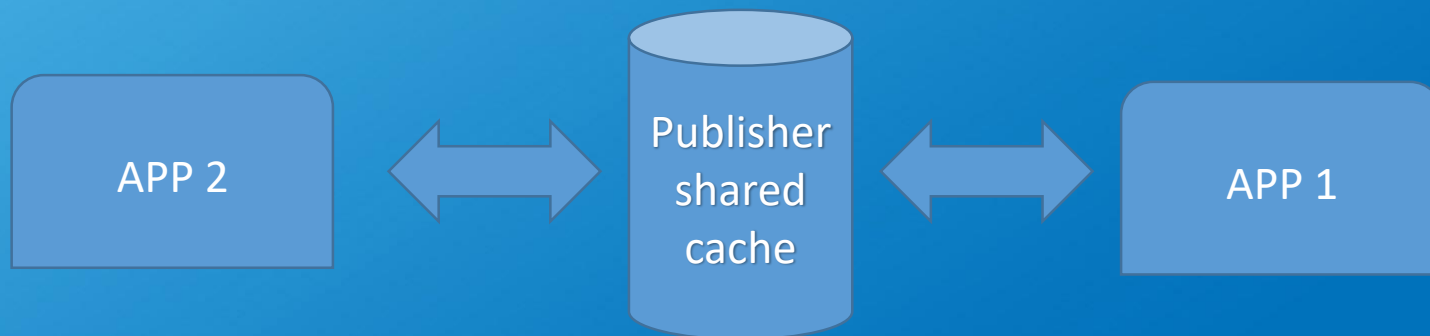


- This folder used for secure storage of password credential object.
- like roaming setting. but its specifically for credentials .
- store credential pairs .
- Storing credential across different device (same user account).
- encrypted , completely secure .



4. Publisher share folder

- new one in windows 10.
- new feature to share data is publish cache .
- shared storage for all apps from the same publisher.
- read and write.
- publish cache share the data across apps for the current user.
- keep data inside the user boundary.



5. File open / save : File picker provider apps

- Its Show how an app can provide files , a save location, and real-time file updates .
- can create picker provider apps , listed in the shell picker (UI) that the user can select .
- Allows user to pick files that the provider app control , or to save new files in the storage of the provider .
- one drive



6. Cloud

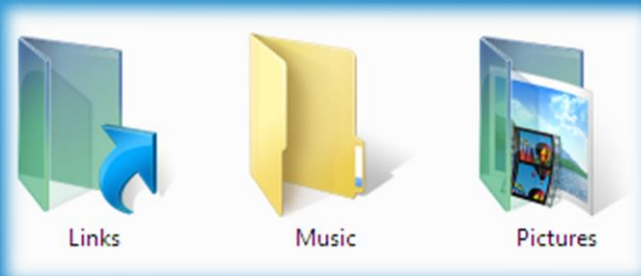


- cloud means storing and accessing data and programs over the Internet instead of your computer's hard drive.
- another module.
- its read / write folders.
- cloud storage to store the state and data .
- start a task on one device and then continuing in another .



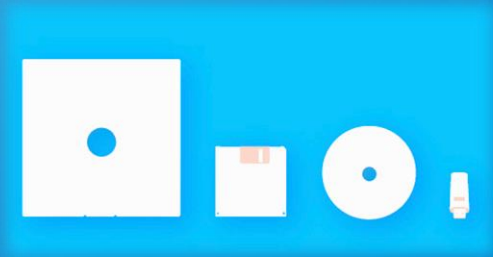
7. Known Folder

- some known place , when the user tend to store stuff .
- (my pictures , my documents , my music and other) .
- Allows to direct access to those locations and file in this location.
- visible to all applications .



8. Removable Storage

- type of storage that can be ejected from a computer when it running.
- easy way to back up , move information .
- sd card , plug-in drive and others .



Thank You For Listening

